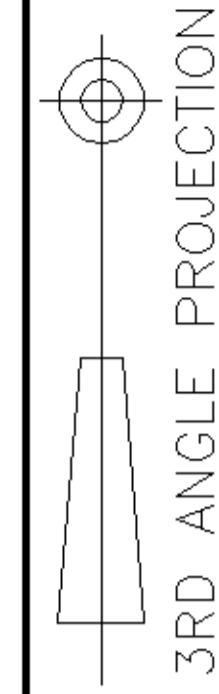


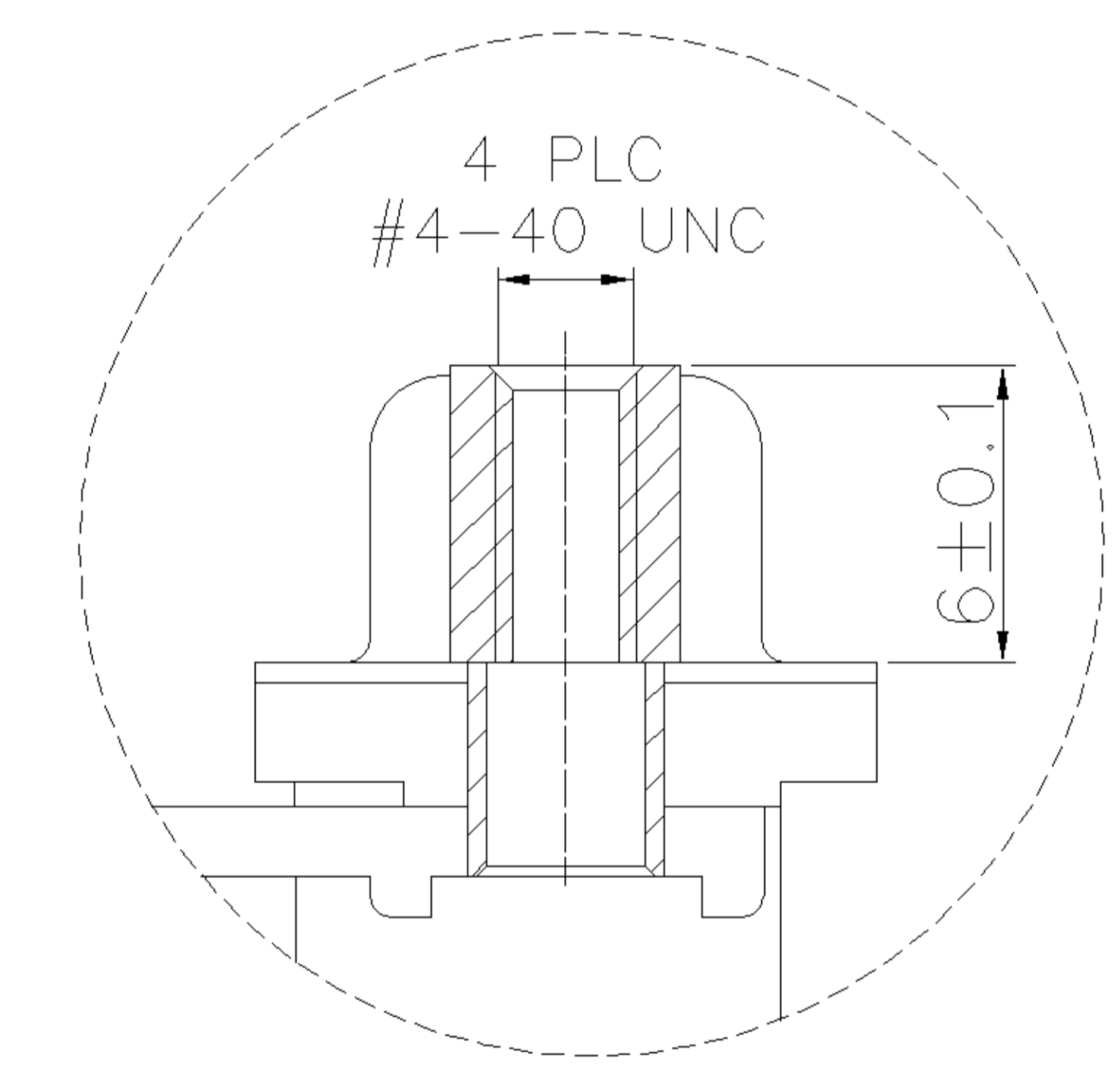
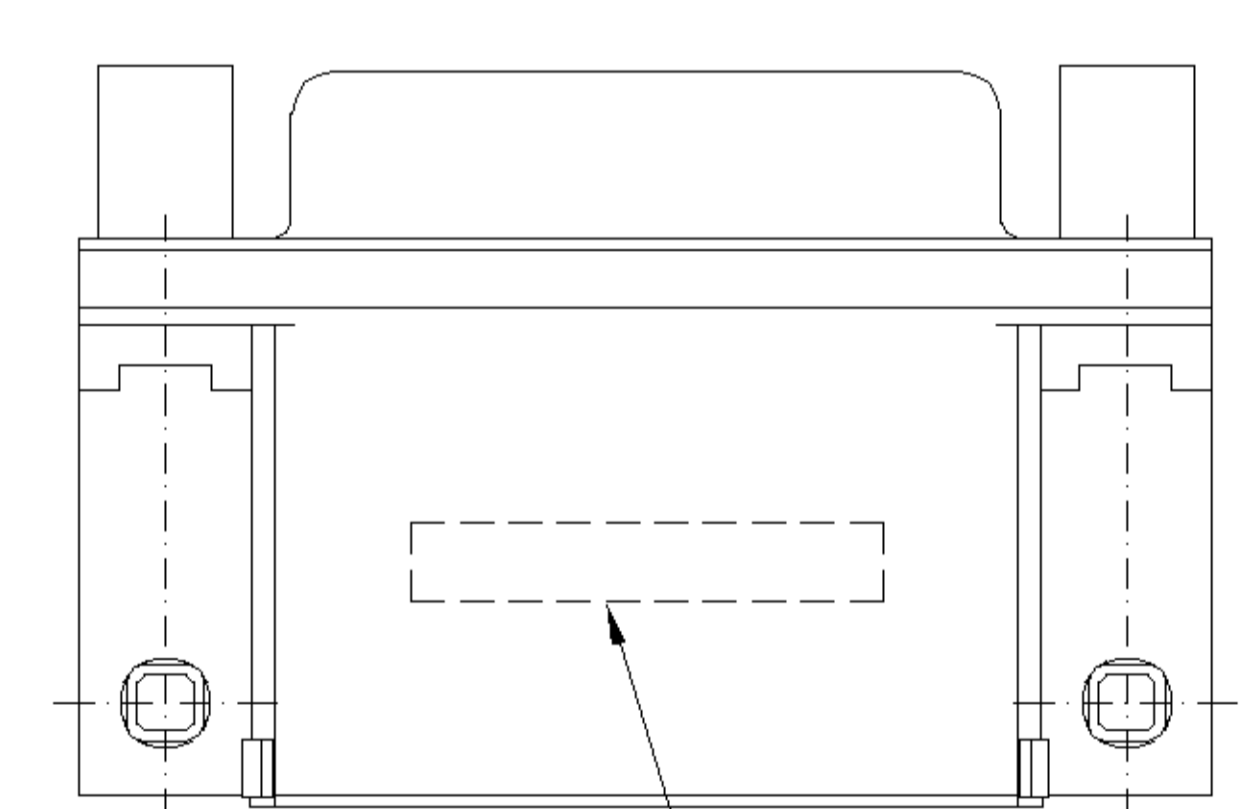
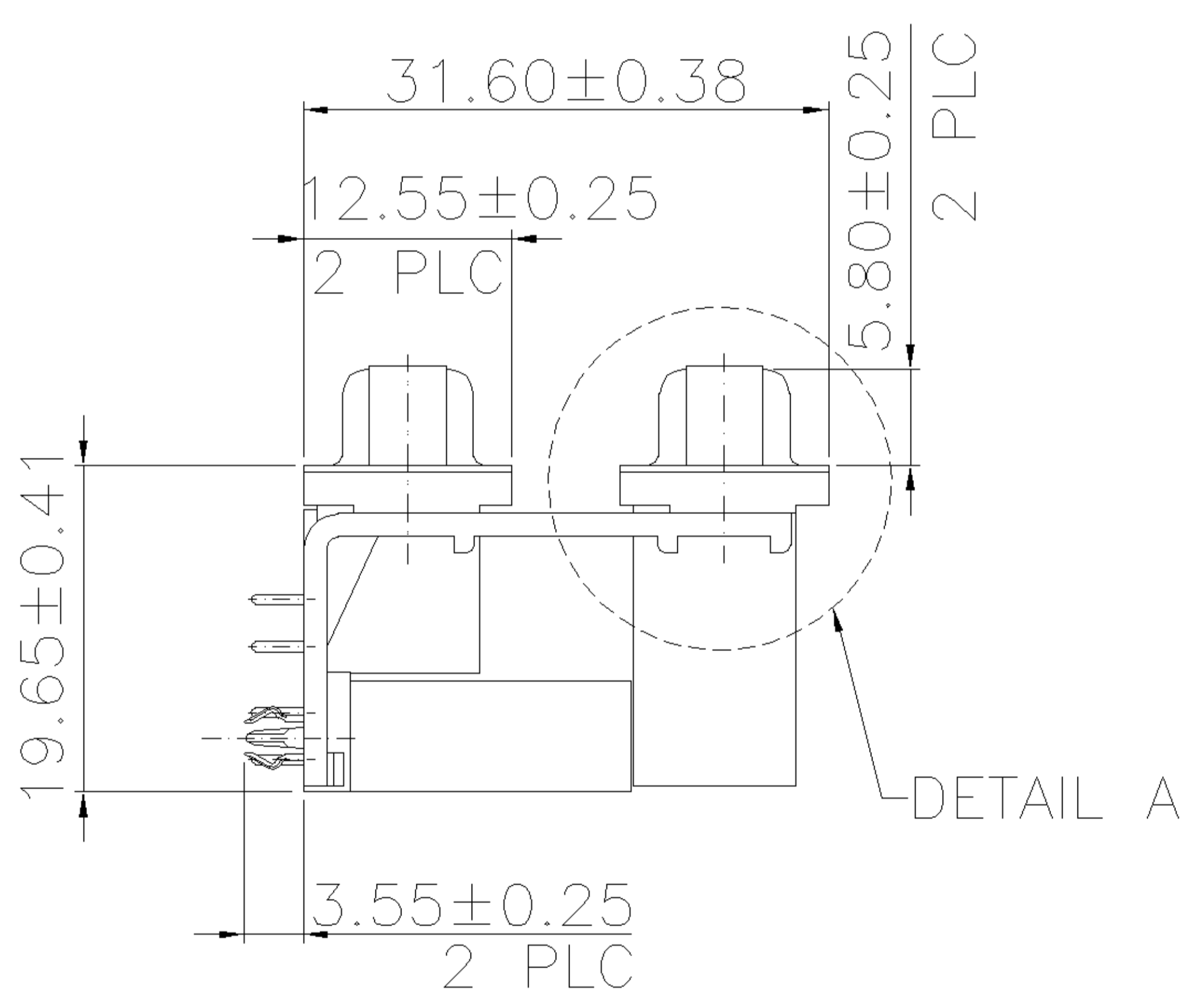
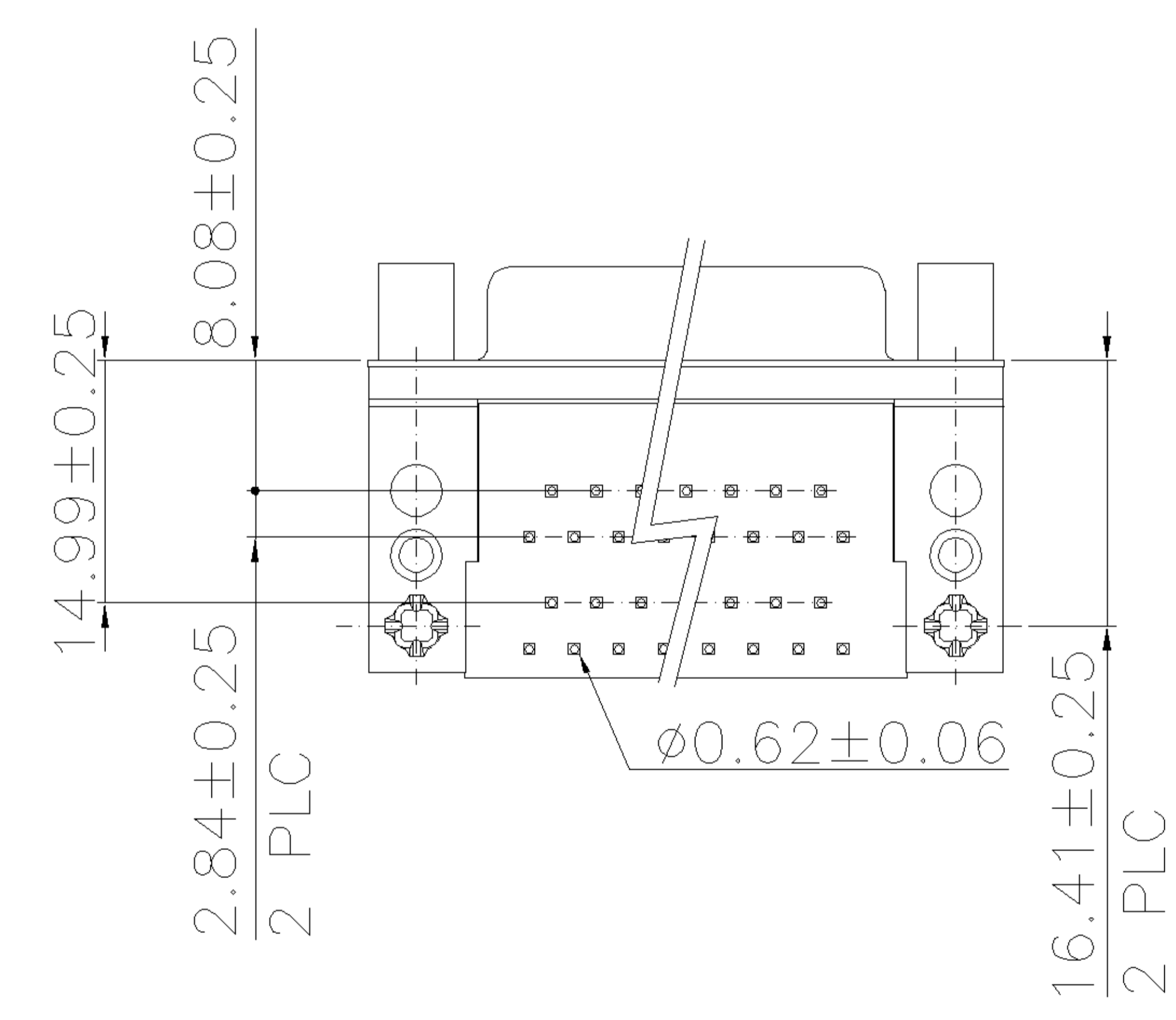
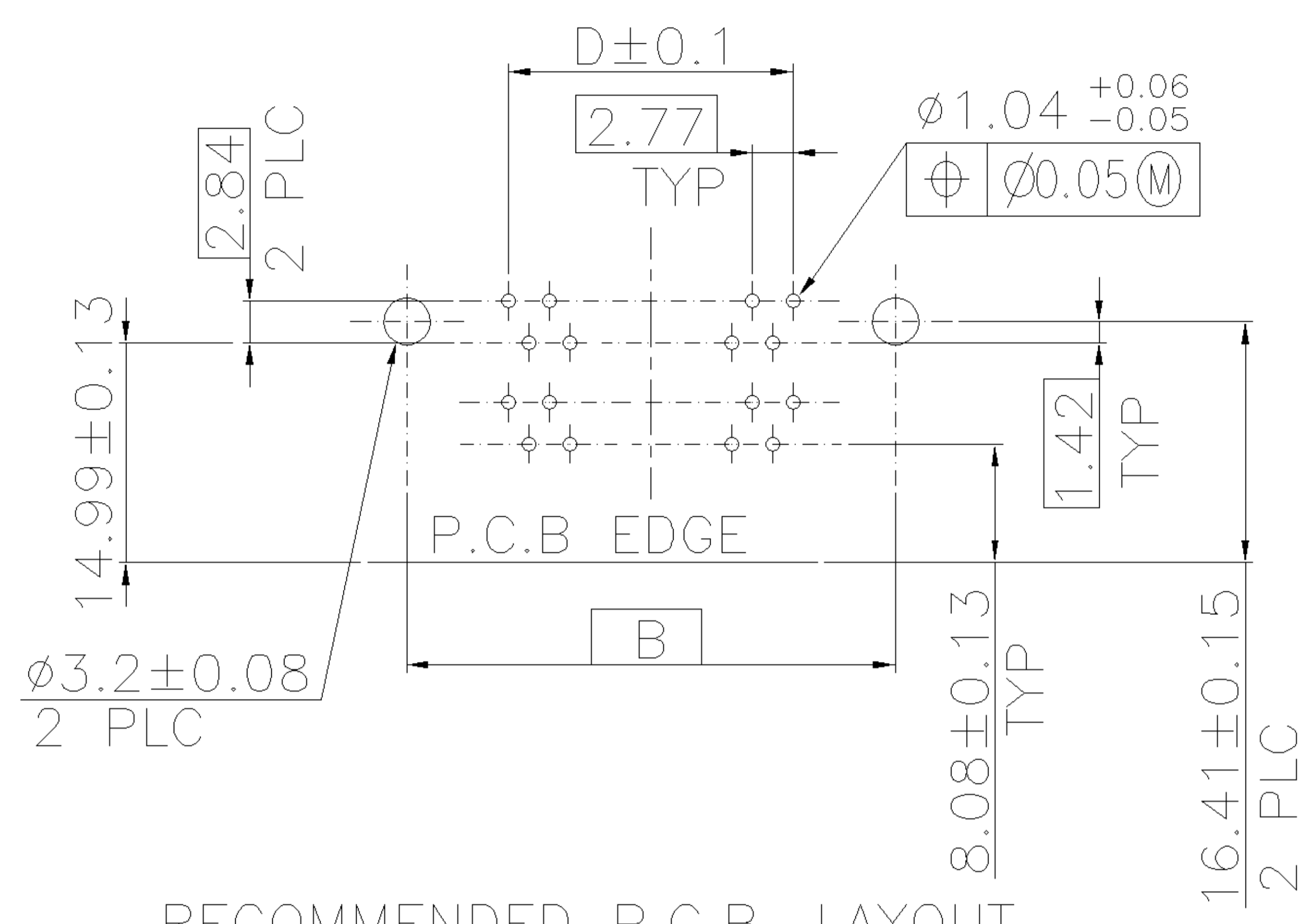
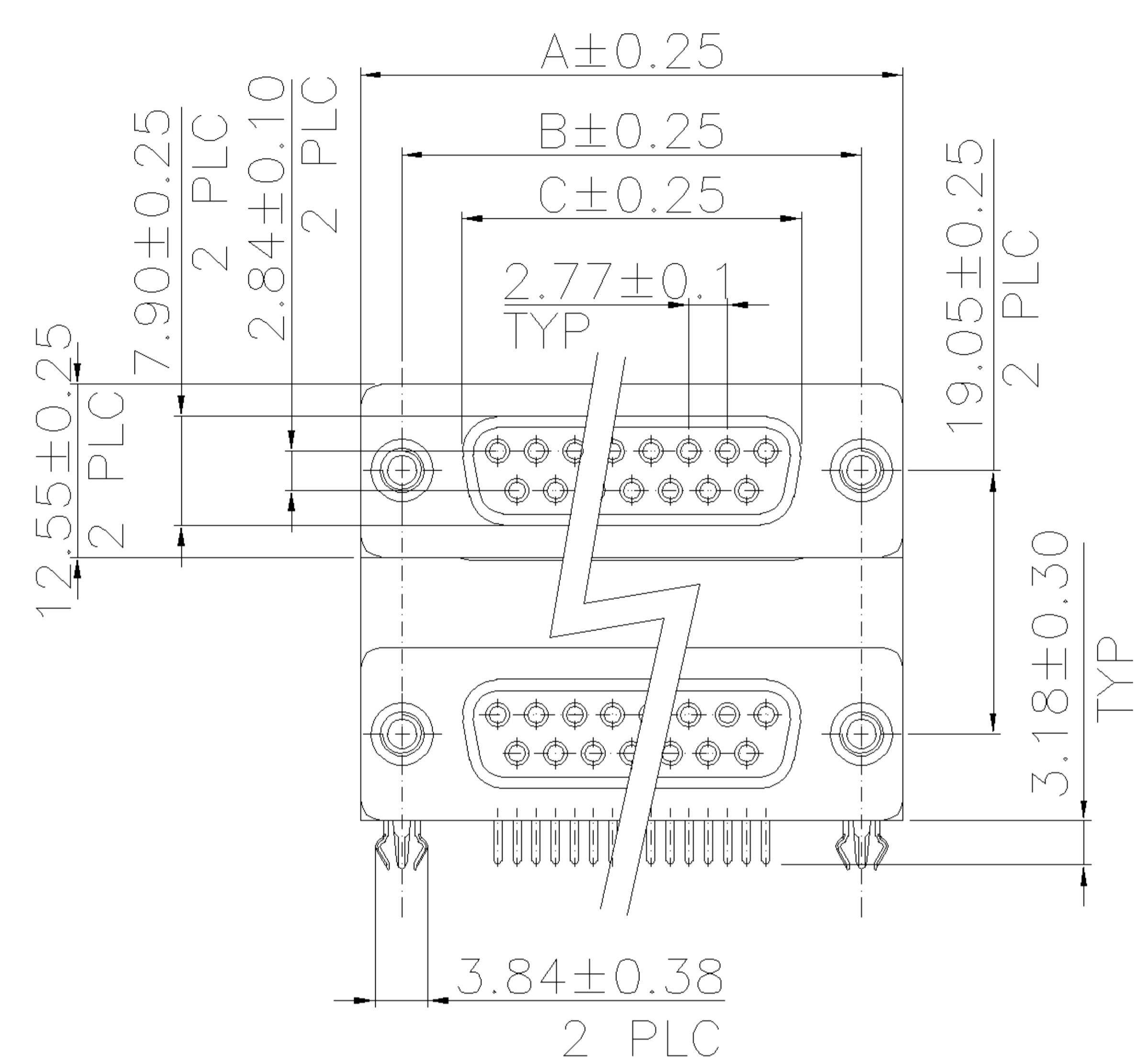
NUMBER
C-1734286



METRIC

THIS INFORMATION IS CONFIDENTIAL AND IS DISCLOSED TO YOU ON CONDITION THAT NO FURTHER DISCLOSURE IS MADE BY YOU TO OTHER THAN AMP PERSONNEL WITHOUT WRITTEN AUTHORIZATION FROM AMP (TAIWAN) LTD. DIMENSIONS IN MILLIMETERS. DO NOT SCALE PRINT.

PRINT
DW



- NOTES:
- MATERIAL:
HOUSING: THERMOPLASTIC(SEE TABLE), UL94V-0;
COLOR: SEE TABLE.
CONTACTS: COPPER ALLOY
BOARDLOCK: COPPER ALLOY
BRACKET: ZINC ALLOY
SHELL: STEEL
 - FINISH:
CONTACT:
GOLD PLATING (SEE TABLE) ON CONTACT AREA.
100u" MIN. BRIGHT TIN PLATING ON SOLDER TAIL AREA,
50u" MIN. NICKEL UNDERPLATING OVERALL.
BOARDLOCK:
60u" MIN. BRIGHT TIN PLATING OVERALL.
SHELL:
60u" MIN. BRIGHT TIN PLATING OVERALL.
 - WAVE SOLDER CAPABLE TO 265°C
PER TYCO SPEC. 109-202, CONDITION B.
 - REFLOW SOLDER CAPABLE TO 260°C
PER TYCO SPEC. 109-201, CONDITION B.
 - CHOOSE PRE-FIX FROM LEFT TABLE AND SUFFIX FROM RIGHT TABLE FOR DESIRED PART NUMBER COMBINATION.

5-1734286-X	15-15	39.30	33.30	24.60	19.39	NY9T
3-1734286-X	37-37	69.34	63.50	54.80	49.86	PBT
2-1734286-X	25-25	53.10	47.04	38.30	33.24	
1-1734286-X	15-15	39.30	33.30	24.60	19.39	
1734286-X	9-9	30.95	24.99	16.20	11.08	
PART NO.	PINS	A	B	C	D	HOUSING

X-1734286-6	30 u"	PC99/ACTUAL COLOR	37-37
X-1734286-5	10 u"	PC99/ACTUAL COLOR	NOT AVAILABLE
X-1734286-4	GOLD FLASH	PC99/ACTUAL COLOR	
X-1734286-3	30 u"	BLACK	
X-1734286-2	10 u"	BLACK	
X-1734286-1	GOLD FLASH	BLACK	
PART NO.	GOLD PLATING	HSG COLOR	

A	REVISE MATERIAL	ECR-06-014922	JL SH	20-JUN-2006
0	NEW RELEASE	--	JL SH	28-DEC-2005
LTR	REVISION RECORD	ECN	DWN CHK	DATE

TOLERANCES UNLESS OTHERWISE SPECIFIED: 0 PLC ± 0.5 1 PLC ± 0.3 2 PLC ± 0.2 3 PLC ± 0.15 ANGLES ± 3'	DWN J. LEE 20-JUN-2006	TYCO HOLDINGS (BERMUDA) VII LTD. TAIWAN BRANCH NAME D-SUB STACKED RCPT. OVER RCPT. R/A TYPE, WITH #4-40 SCREWLOCK
MATERIAL SEE NOTE	CHK S. HOU 20-JUN-2006	
FINISH SEE NOTE	APVD W.J. KE 20-JUN-2006	LOC DW SCALE A ₃
	PRODUCT SPEC 108-57517	DRAWING NO C-1734286
	QUALIFICATION TEST REPORT 501-57590	REV A
	WEIGHT	SHEET 1 OF 2